



World Class Automatic Transfer Switches | [tech@specializedpower.net](mailto:tech@specializedpower.net) | [www.SpecializedPower.net](http://www.SpecializedPower.net)

## DIPLOMAT SERIES AUTOMATIC TRANSFER SWITCH

100A to 4000A ATS | Non Service Entry Rated | Modern, Reliable & Cost Effective ATS Cabinets



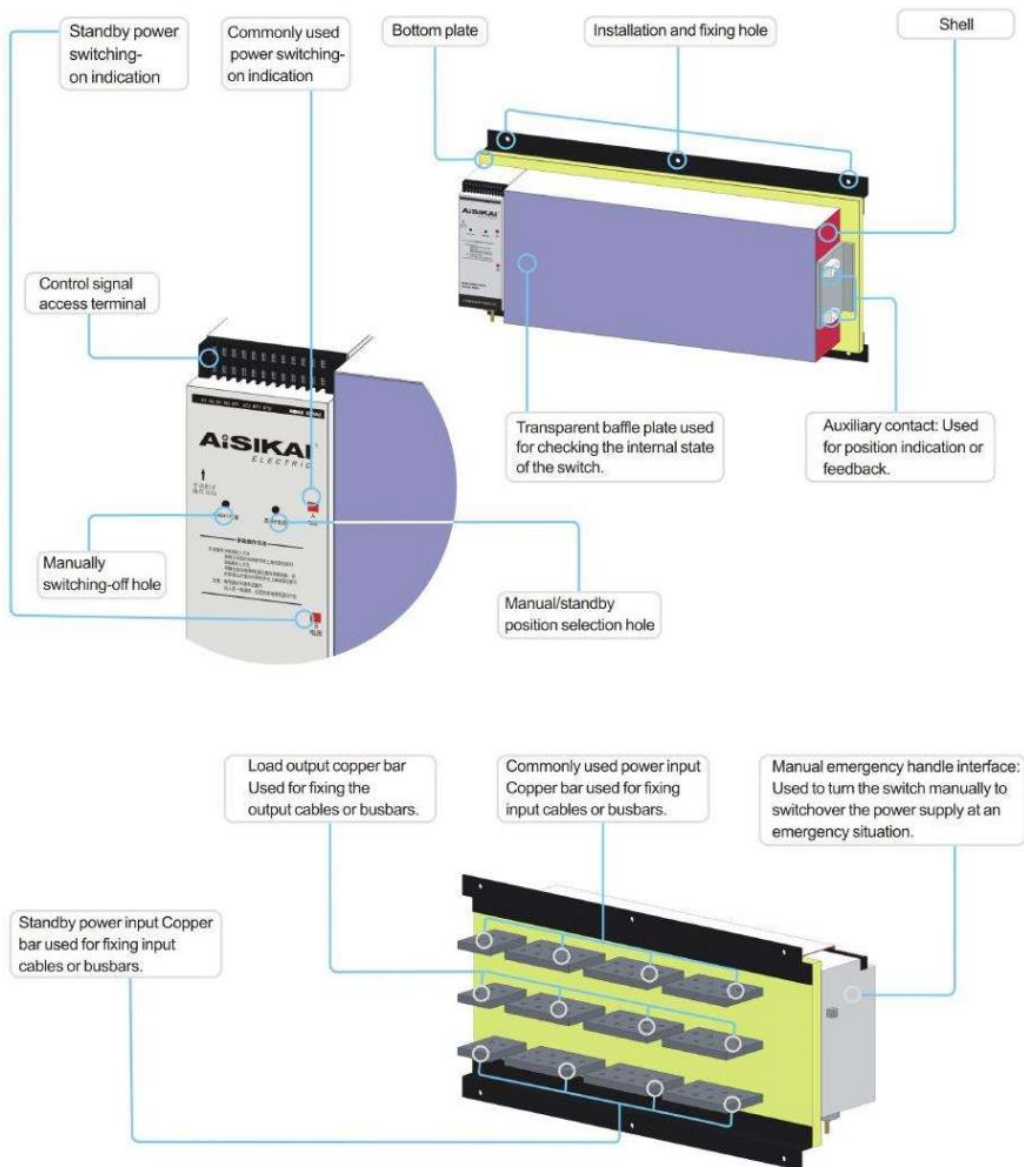
### FEATURES:

- Inline Breaker Included
- 50HZ or 60HZ, 3 Pole or 4 Pole
- Smartgen or Deepsea Digital Controller Included
- Custom Cabinet and Colors Available
- World Class, Top Quality, 1 Year Warranty, Extended Warranty Available

## INTERNAL SWITCH MECHANISM: ASKQ SERIES

### CLASS PC AUTOMATIC SWITCH ATS ASKQ SERIES

#### STRUCTURE INTRODUCTION (3200A-6300A)



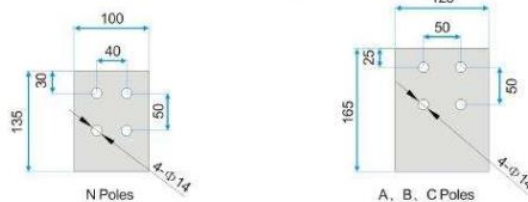
## INTERNAL SWITCH MECHANISM: ASKQ SERIES

### CLASS PC AUTOMATIC SWITCH ATS ASKQ SERIES

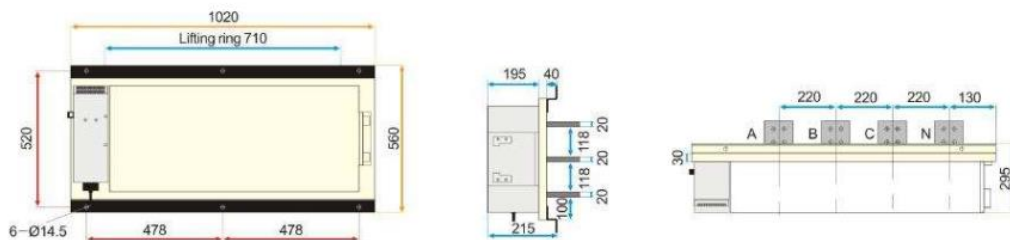
#### MAIN TECHNICAL PARAMETERS (3200A-6300A)

Conventional thermal current Ith		3200A, 4000A, 5000A, 6300A	
Rated insulation voltage of copper bar Ui		AC800V	
Rated impulse withstand voltage Uimp		8kV	
Copper bar rated operating voltage Ue		AC400V	
Copper bar rated operational current Ie		3200A, 4000A, 5000A, 6300A	
Mechanical structure		Three-section type	
Wiring mode		After panel (Before plate shall be the product supplied specially)	
Number of poles		3P	4P
Weight (kg)		121	130
Operating current (A)	DC110V/125V	36	38
	AC100V/110V	36	38
	AC200V/220V/230V	18	20
Tripping current (A)	DC110V/125V	6	
	AC100V/110V	6	
	AC220V	2	
Short time withstand current		50kA	
Rated limit short-circuit current (fuse for protection)		120KA	
Making and breaking capacity		AC-33B (10Ie making/10Ie breaking) cos=0.35 DC-33B(4Ie making/4Ie breaking)/R=2, 5ms	
Performance	Time-shifting	A source-B source B source-A source	< 0.2s
	Service life	Electrical service life : 6000 times, Mechanical service life: 10000 times.	
	Operating cycle frequency	120 times/hour	
Auxiliary switch		A and B power supply sides are 2 normally open and 2 normally closed; switching capacity : AC: 110V5A/AC: 220V3A DC: 220V0.2A.	
Accessory		Operating handle	

#### INPUT AND OUTPUT COPPER BAR DIMENSIONS CHART (3200A-6300A)



#### OUTLINE DIMENSIONS DIAGRAM (3200A-6300A)



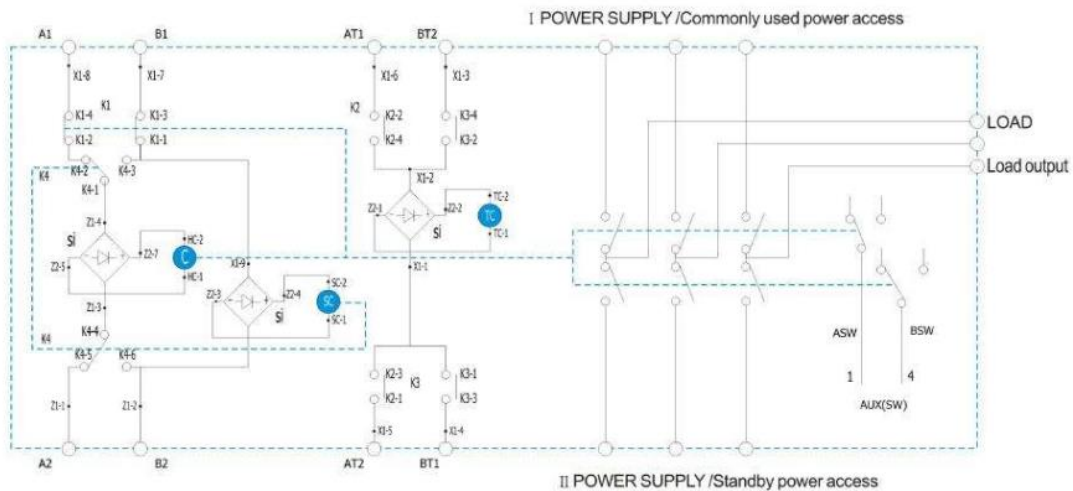
- Note: ATS is equipped with four lifting rings. Before lifting, it is necessary to check the lifting rings to find out whether they are tightened up onto the mounting guideway of the switch, to check the carrying capacity of the ropes to find out whether it should not be less than 500kg and to carry out a trial lifting to determine the position of the center of gravity of the ATS, so as to prevent any rollover and slipping accident occurring due to the incorrect center of gravity.

## INTERNAL SWITCH MECHANISM: ASKQ SERIES

### CLASS PC AUTOMATIC SWITCH ATS ASKQ SERIES

INTERNAL PRINCIPLE DIAGRAM (3200A-6300A)

#### ASKQ SERIES



C = input coil  
SC = Selection coil  
TC = Tripping coil  
SI = Rectifier  
LS = Selector switch

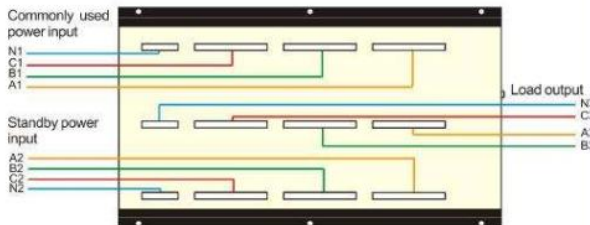
ATS1, ATS2 = A power disconnect terminal  
BTS1, BTS2 = B power disconnect terminal  
AX, BX = control switch  
AUX = auxiliary switch

A1-A2 = A power side input terminal  
B1-B2 = B power side input terminal  
BT1-BT2 = B power side tripping terminal  
AT1-AT2 = A power side tripping terminal

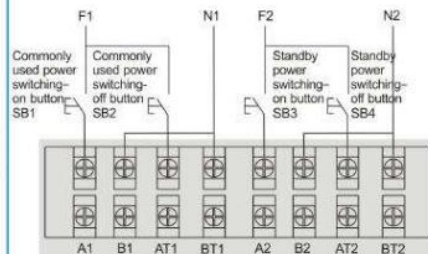
Dynamic contacts  
Static contact

TYPICAL WIRING (3200A-6300A)

#### First wiring schematic diagram



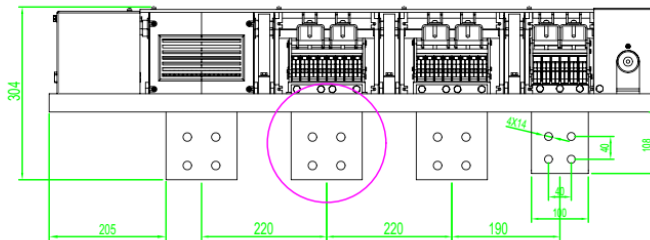
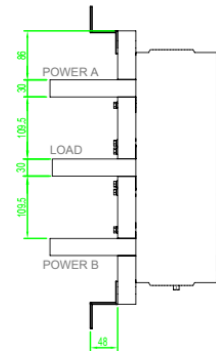
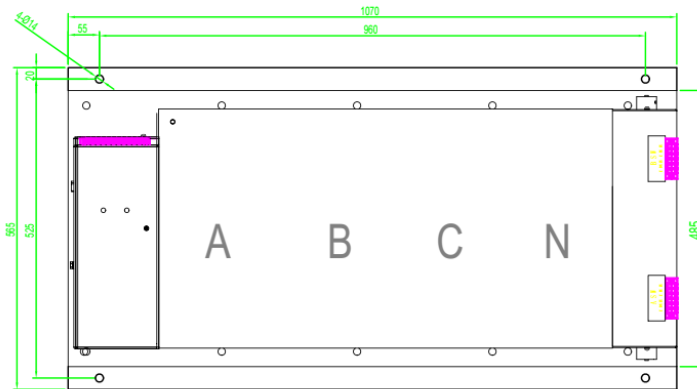
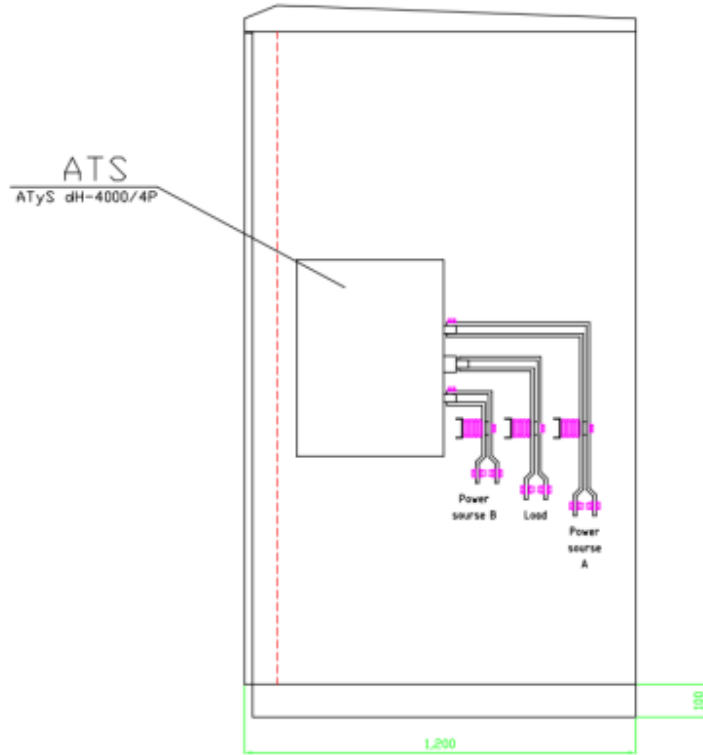
#### Secondary wiring schematic diagram





World Class Automatic Transfer Switches | tech@specializedpower.net | www.SpecializedPower.net

### CABINET AND SWITCH DIMENSIONS



#### BUS DETAILS

