

2020-06-20

Battery Management System Ver3.4

串口模块异常, 请重新配置通信参数...

Function: System Control | Data record | Command Test | Help? COM3 9600

Pack 01 Pack 02 Pack 03 Pack 04 Pack 05
 Pack 06 Pack 07 Pack 08 Pack 09 Pack 10
 Pack 11 Pack 12 Pack 13 Pack 14 Pack 15
 Select ALL ALL Clear Battery pack Selector

Manual
 Automatic

Protocol Parameter | Setting | Connect | Disconnect | Log | Interval(s) 1 | Refresh

Pack #01

Protector type: EWEM-601 | Protocol version: Ver 1.0

RS485 USB-CAN

COM Setting

PortName: COM3 | Communication transmissi

BaudRate: 9600 | Starting bit 1 bit

Device addr: 0x 10 | Data bit 8 bits

Address should be completed in 16 | Stop bit 1 bit

No parity checking

Configured communication parameters

PortName: ---

BaudRate: ---

CAN setting

CAN type: DEV_USBCAN

Filter: ALL

Baudrate: 250Kbps

Mode: Normal

Initialization

Pack information

Discharging Charging

Current-limiting Warning

Equilibrium _____

Real-time recording

Save As:

Recording

Start Time:

End Time:

Device Info

Manufacturer: ---

Pack_Total: ---

Component: ---

HW version: ---

SW version: Ver 0.9

Real-time early warning

Alarm type	Pack number	Core number	DateTime
*			

2020-06-20

Battery Management System Ver3.4

Serial port initialization complete

Function: System Control | Data record | Command Test | Help? COM3 9600

Pack 01 Pack 02 Pack 03 Pack 04 Pack 05
 Pack 06 Pack 07 Pack 08 Pack 09 Pack 10
 Pack 11 Pack 12 Pack 13 Pack 14 Pack 15
 Select ALL ALL Clear Battery pack Selector

Manual
 Automatic

Protocol Parameter | Setting | Connect | Disconnect | Log | Interval(s) 1 | Refresh

Pack #01

Pack #01

Total voltage: ---

Total current: ---

Max-voltage: ---

Min-voltage: ---

Mean-Voltage: ---

Residual: ---

Circle: ---

TEMP1: --- TEMP4: ---

TEMP2: --- TEMP5: ---

TEMP3: --- TEMP6: ---

MOSFET TEMP1: ---

MOSFET TEMP2: ---

Pack information

Discharging Charging

Current-limiting Warning

Equilibrium _____

Core Voltage(V)

Real-time recording

Save As:

Recording

Start Time:

End Time:

Device Info

Manufacturer: ---

Pack_Total: ---

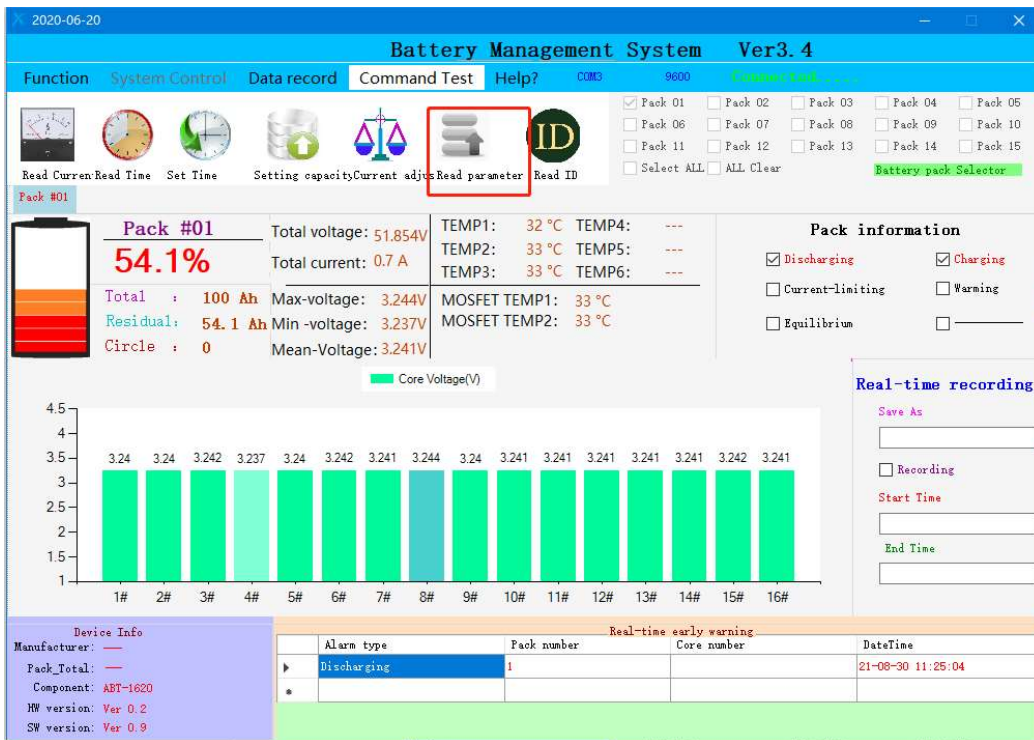
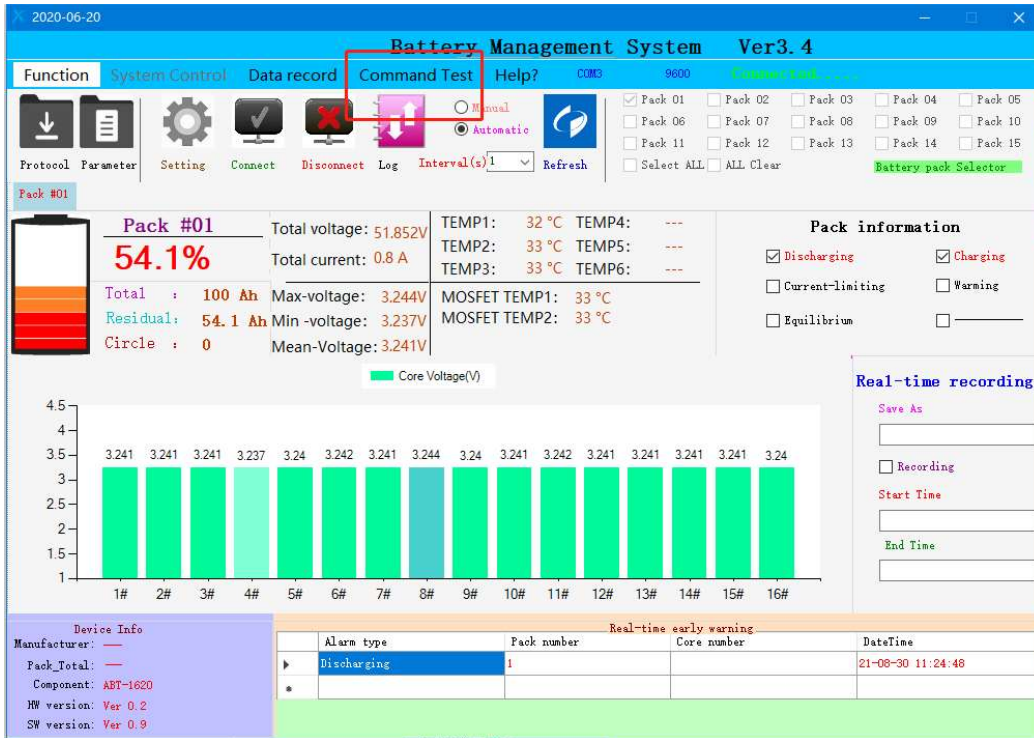
Component: ---

HW version: ---

SW version: Ver 0.9

Real-time early warning

Alarm type	Pack number	Core number	DateTime
*			



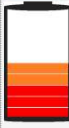
2020-06-20

Battery

Function System Control Data record Command Test

Read Current Read Time Set Time Setting capacity Current adjust Read parameter

Pack #01



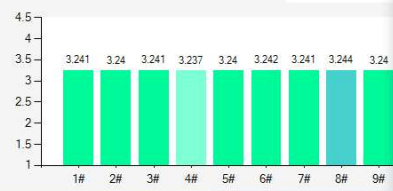
Pack #01
54.1%

Total : 100 Ah
Residual: 54.1 Ah
Circle : 0

Total voltage: 51.852V
Total current: 0.8 A
Max-voltage: 3.244V
Min -voltage: 3.237V
Mean-Voltage: 3.241V

TEMP1
TEMP2
TEMP3
MOSFE
MOSFE

Core Voltage(V)



Cell	Voltage (V)
1#	3.241
2#	3.24
3#	3.241
4#	3.237
5#	3.24
6#	3.242
7#	3.241
8#	3.244
9#	3.24

Device Info
Manufacturer: ---
Pack_Total: ---
Component: ABT-1620
HW version: Ver 0.2
SW version: Ver 0.9

Alarm type
Discharging

Parameter management

Parameter	Switch	Other	
Number	Name	Value	Unit

Please choose material

Open Read Save Download

Parameter management

Parameter **Switch** Other

	Numbe	Name	Status	Function
▶	1	weak-current switch	Off	
	2	Auto power off	Off	
	3	Charging current limit	On	
	4	Buzzer	On	

set on

Please choose material

Open Read Save Download

Parameter management

Parameter Switch Other

	Numbe	Name	Status	Function
▶	1	weak-current switch	Off	
	2	Auto power off	Off	
	3	Charging current limit	On	
	4	Buzzer	On	

choose lithium

Please choose material

Open Read Save Download

Lithium Ternary Lithium LTO

Parameter management

Parameter Switch Other

	Numbe	Name	Status	Function
▶	1	weak-current switch	Off	
	2	Auto power off	Off	
	3	Charging current limit	On	
	4	Buzzer	On	

Open Read Save

Please choose material

Lithium ▾ Download